

Operating Instructions

(Read this manual carefully before using EDGELIGHT[™] Product)

Shanghai Edge Light Industry Co.,LTD.

Add:3301 South Hongmei Rd., Minhang District,
Shanghai, China ZIP:201108

TEL:+86-21-64412288

FAX:+86-21-64412266

E-mail: info@cnedgelight.com

Published by EDGELIGHT Corporation

Copyright 2008 EDGELIGHT Corporation

All rights reserved.

Operating Instructions

Thank you for buying this EDGELIGHT™ product. Please read through these operating instructions so you will know how to operate your unit properly. After you have finished reading the instructions, keep them in a safe place for future reference.

WARNING

This product is not waterproof. To prevent a fire or shock hazard, do not place any container filled with liquid near this equipment or expose it to dripping, splashing, rain or moisture.

IMPORTANT



The lightning flash with arrowhead symbol, within an equilateral triangle, is intended to alert the user to the presence of uninsulated "dangerous voltage" within the product's enclosure that may be of sufficient magnitude to constitute a risk of electric shock to persons.

**CAUTION
DO NOT OPEN**

CAUTION:
TO PREVENT THE RISK OF ELECTRIC SHOCK, DO NOT REMOVE COVER (OR BACK). NO USER-SERVICEABLE PARTS INSIDE. REFER SERVICING TO QUALIFIED SERVICE PERSONNEL.



The exclamation point within an equilateral triangle is intended to alert the user to the presence of important operating and maintenance (servicing) instructions in the literature accompanying the appliance.

Information to User

Alteration or modifications carried out without appropriate authorization may invalidate the user's right to operate the equipment.

Operating Instructions

SAFETY INSTRUCTIONS

To ensure your personal safety and to maximize the full operating potential of this product, read and follow these safety precautions:

ENVIRONMENT-DO NOT use the unit at places with high levels of dust, high temperature, or high humidity. Please use the unit in a place where it is not subjected to vibrations or shocks.

POWER- Please use correct power as required for this product.

READ INSTRUCTIONS-Read all safety and operating instructions before this product is operate

RETAIN INSTRUCTIONS-Retain the safety and operating instructions for future reference.

FOLLOW INSTRUCTIONS-Follow all operating and use instructions.

HEED WARNINGS-AI warnings must be adhered to.

CLEANING-DO NOT use aerosol cleaners. Use only a little alcohol or a damp cloth to clean the exterior housing.

WATER AND MOISTURE-DO NOT use this product near water.

POWER SOURCES- Operate this product from the type of power source indicated on the marking label. If you are not sure of the type of power available, consult Authorized EDGELIGHT™ Dealer.

OVERLOADING-DO NOT overload wall outlets and extension cords. Doing so can result in fire or electric shock.

OBJECT AND LIQUID ENTRY-Never push objects of any kind into this product. Touching dangerous voltage points may cause a short resulting in fire or electric shock. Do not spill liquid of any kind on this product.

CONDENSATION-Moisture will form in the operating section of the product causing performance to be impaired if it is brought from cool surroundings into a warmer environment. If you are moving the unit to a location with a warmer temperature, let the product stand for 1 to 2 hours in the new location before turning it back on.

Operating Instructions

SPECIFICATIONS



AF2/AF4 Mirror Light Box

AF2/AF4 Mirror Light Box is a new product, which realizes an automatic conversion from the mirror to the advertising poster by using an advanced infrared sensor switch. When the user comes up, it works as a mirror; when stepped away, it works as a display screen.

Item	Frame size	Viewing size	Thickness	Film size	Packing size	Gross weight	
AF2-M-LED	A0	1227×889mm	1157×819mm	25mm	1189*841 mm	1340*90*1020	15.8
	A1	632×889mm	562×819mm		841*594 mm	995*90*765	9.3
	A2	458×642mm	388×572mm		594*420 mm	730*90*562	6.2
	A3	335×468mm	265×398mm		420*297 mm	571*90*454	3.5
AF4-M-LED	A0	1280×921mm	1168×809mm	33mm	1189*841 mm	1340*90*1020	16.2
	A1	685×921mm	573×809mm		841*594 mm	995*90*765	9.8
	A2	511×674mm	399×562mm		594*420 mm	730*90*562	7
	A3	335×468mm	265×398mm		420*297 mm	571*90*454	4
Life span	T5-----Above 10000h		LED-----Above 50000h				

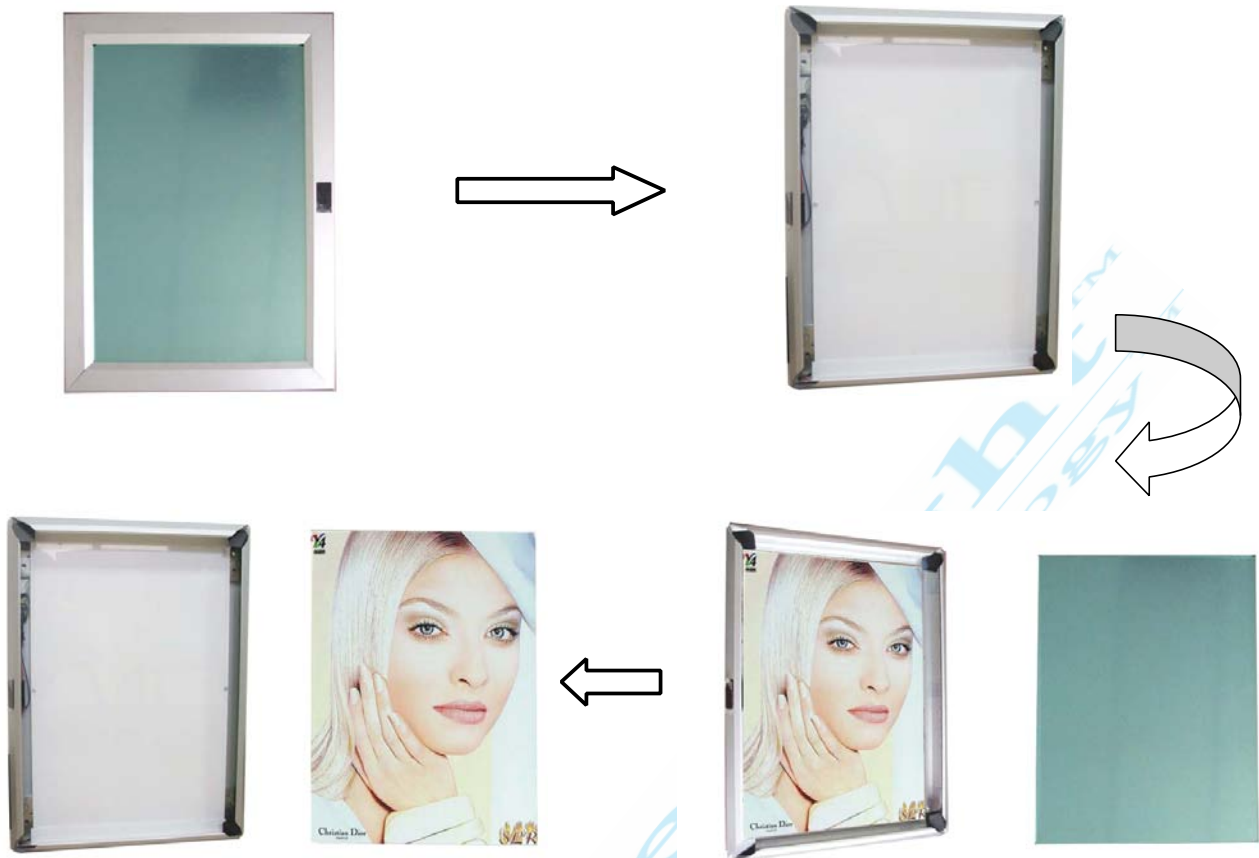
INSTALLATION

Graphic Replacement

1. Turn off power
2. Open the four upper covers
3. Remove front board and AD graphic
4. Change AD graphic
5. Place back the front board
6. Close the four upper cover

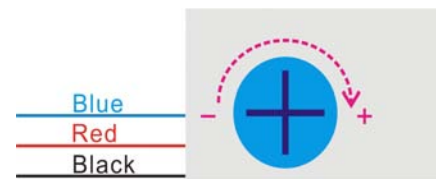
Please see as follows:

Operating Instructions



How to adjust the sensing distance

1. Turn off power
2. Open the four upper covers
3. See the demonstration on the right side
(along the clockwise rotation to increase the sensing distance,
while the anti-clockwise rotation to reduce the distance)



On the Wall

1. Measure installation dimension
2. Fix the light box on the wall by screws
 - A. If the wall is made of wood, plastic, aluminium and so on, you can directly fix the light box on the wall by self-tapping screws
 - B. If the wall is made of concrete, brick, marble and so on, you should firstly drill holes in the wall and screw expand screws, and then fix the light box.
3. Connect the power supplier

Please see as follows:

Operating Instructions



ACCESSORIES

Operating instruction x 1

Power supply (AC100-240V) x 1

(Various plugs are available for your needs, such as CE, UL, SAA, etc.)



CE



UL



SAA

NOTICE

* Pay more attention that Slim Light Box not to be crashed. While transporting or working, keep sharp edge or instrument away from Slim Light Box. Use soft & wet textile to clean front board to avoid being scratched. Make sure to use right voltage.

* Specifications and design subject to possible modifications without notice, due to improvement.

PLS download the more detailed user manual from the following website:

<http://www.cnedgelight.com/image/AF4-MSeries.pdf>



Printed in China



is a trademark of Shanghai Edge Light Industry Co., Ltd

<http://www.cnedgelight.com>